

History of RIWC

Founded in 1982, RIWC is a non-profit community-based immigrant women's organization committed to the empowerment of women. RIWC operates from a holistic and integrated service model that address the social, cultural and political realities of minority communities informed by feminist and anti-racist values. RIWC works with a wide range of community based organizations, coalitions and research networks to address women's equality issues to facilitate policy and social change.

RIWC is a multilingual agency with experience in delivering settlement, language training, anti-violence and employment services for marginalized women and their families in the Toronto area.

Mission

We are committed to supporting Asian and South Asian women and their families in taking greater control of their lives. RIWC provides culturally appropriate and linguistically specific settlement support and counseling services with the use of community determined strategies, developed and delivered by immigrant women.



Languages

We offer services in the following:

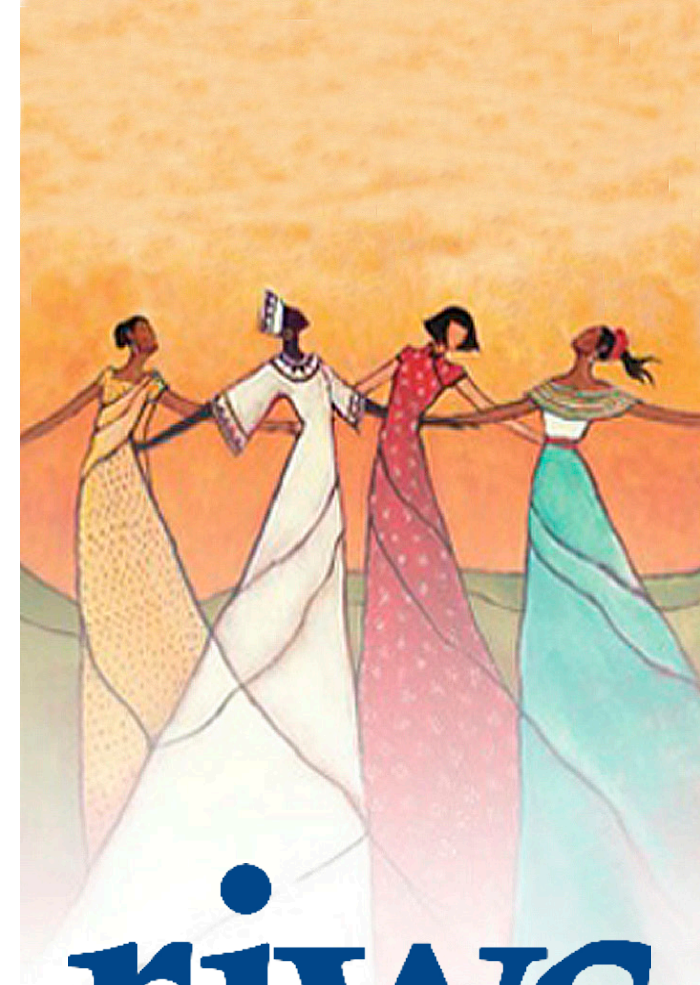
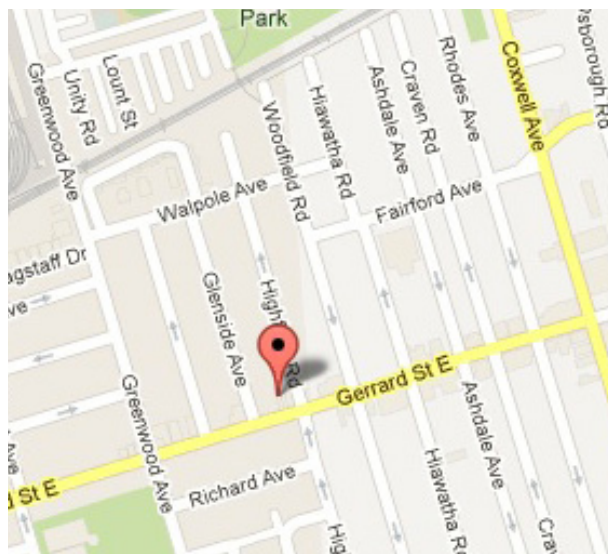
English	Hindi
Patois (Caribbean)	Spanish
Arabic	Italian
Urdu	Tamil

Location

1326 Gerrard St. East, Toronto,
Ontario, Canada M4L 1Z1
Tel - 416 465-6021

reception.riwc@gmail.com
www.riwc.ca

We are located on Gerrard St. E. in the heart of Little India, between Greenwood Avenue and Coxwell Avenue.



riwc
RIVERDALE IMMIGRANT
WOMEN'S CENTRE

1326 Gerrard St. East, Toronto,
Ontario, Canada M4L 1Z1
Tel - 416 465-6021

reception.riwc@gmail.com
www.riwc.ca

Our Programs and Services

RIWC provides a broad range of services essential to the integration of immigrant communities.

We also assist under-served groups such as youth, seniors, lesbians, refugees and other vulnerable women who are isolated and have limited access to services.

Settlement Program

Addresses the psychosocial needs and structural barriers affecting the lives of newcomers and their families in the process of settlement.

Services

- Community outreach, information and referral, translation and interpretation on immigration, housing, health, employment, financial, legal and other relevant issues
- Crisis and supportive counseling in the areas of cultural dislocation, adjustment to role changes, isolation, racism and loss of extended family support systems

Essential Pathways to Employment Program (EPE)

FREE, 8-week program for women and men receiving Ontario Work. Provides skills training and tools to build assets and abilities to enter the labour market. Includes 2-week, hands on, in-house skills training and 6-month, post-program support. Post-hiring support includes gaining successful employment, job maintenance and retention.

Services

- In-depth client assessment and development of client action plan
- Food and hospitality training
- Computer skills training and labor market trends
- Job search, resume and cover letter writing and interview preparation
- Strategic information sessions / workshops

Violence Against Women Program (VAW)

Assists women and children victimized by violence by providing emotional and practical support. Increases safety of immigrant women and children who are fleeing violent relationships and ensures their lives are not endangered, by choosing a life free from abuse.

Services

For women who identify or have been identified as having been physically, sexually or emotionally abused by her partner or significant others.

- Individual and group counseling for crisis, abuse, assault and trauma
- Safety plan development and support groups for VAW clients and their children
- Help with filling out various forms and applications
- Escort and advocacy for courts and legal appointments
- Information and referrals to shelters, house and other community services including employment support
- Stress management, assertiveness training, life skills and self esteem building programs

Toronto - A Place to Call Our Own: Empowering Women to Take Action for Affordable Housing

At RIWC, we have joined with eight women-serving organizations from across Toronto to partner in a 36-month initiative to address the alarming number of women living in unsafe or unhealthy accommodations.

With funding from the Status of Women Canada, the action plan includes building a safety and inclusion network to support women in their housing, proposing housing policy changes and designing a women's housing model that works.

Anti-Violence Youth Program

Focuses on youth leadership development, anti-violence education and non-violence relationships. Improves the health and safety of girls, young women and their children who are victims of physical and emotional abuse and / or sexual assault. Improves access to information promoting healthy relationships and support services for those affected by violence.

Services

- Individual and group crisis/anti-violence counseling
- Referrals, information, employment and housing services
- Workshops for youth leadership development
- Outreach work with other community agencies and schools within The City of Toronto

Volunteer and Student Placement Program

Offers community members and students the chance to build marketable skills through skills training, leadership development and job placement opportunities. All volunteers are provided with reference letters.

Opportunities

- Placement with settlement and violence against women counselors
- Reception / administrative / computer training / life-skills and hospitality training
- Translation and interpreter opportunities
- Research opportunities